

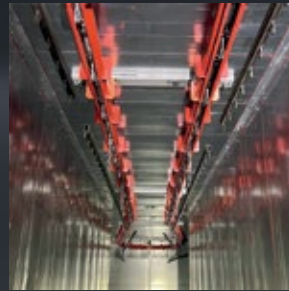
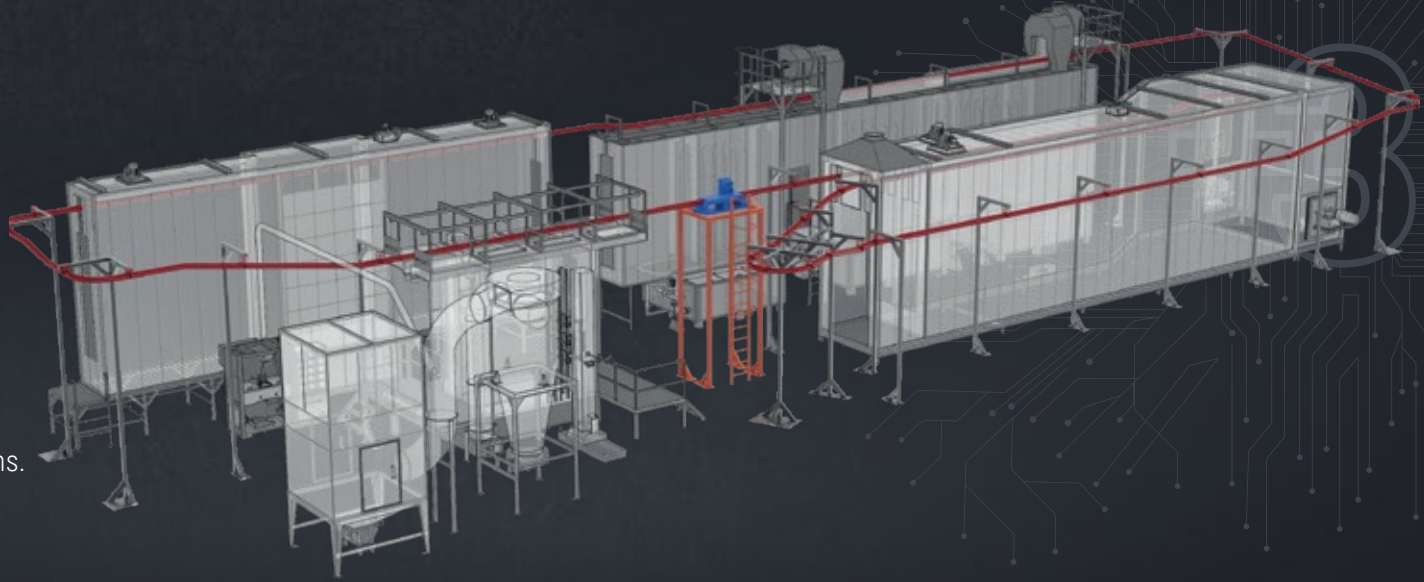
# CONVEYOR Systems

## COATING SYSTEMS

Conveyor Systems are one of the most important components used in the facilities. Webb, Cardan, Power & Free, and Busbar Transfer conveyor systems carry the painted components many kilometers annually and have an important task.

Heavy workpieces are transported by Webb type conveyor consisting of long life bearings and steel cast chains. It has a large carrying capacity between 120 kg and 2 tons.

- + Contains long-lasting bearings and strong cast steel chains.
- + Provides solutions suitable for modern production requirements with different automation options.
- + It minimizes the need for maintenance with its automatic lubrication features.
- + Customizable design and functionality to suit each customer's specific needs.
- + These conveyor systems are designed for long-term and trouble-free operation while increasing the efficiency and safety of production processes in facilities. High-quality components and customizable features enable these systems to adapt to any production environment and provide optimum performance.



Check our  
product  
online

[electron.com.tr](http://electron.com.tr) + [info@electron.com.tr](mailto:info@electron.com.tr)

 **Electron**