

E-FEED+3 BARREL Series

E-FEED+3 BARREL is a new system making powder coating applications easier by preventing continuous powder coating changes compatible with paint stations.

E-FEED+3 HD is used along with the application pump to pump powder paint to the powder coating center thanks to its flawlessly working system. Suitable for continuous powder coating with 100 and 200 kg barrel options. Designed for monochrome paint applications.

Additionally, with E-FEED+3 BARREL DUAL the same features can be doubled thanks to its double pump. Suitable for more applications with more powder spray guns.

POWDER COATING DEVICES



Easy
Maintenance



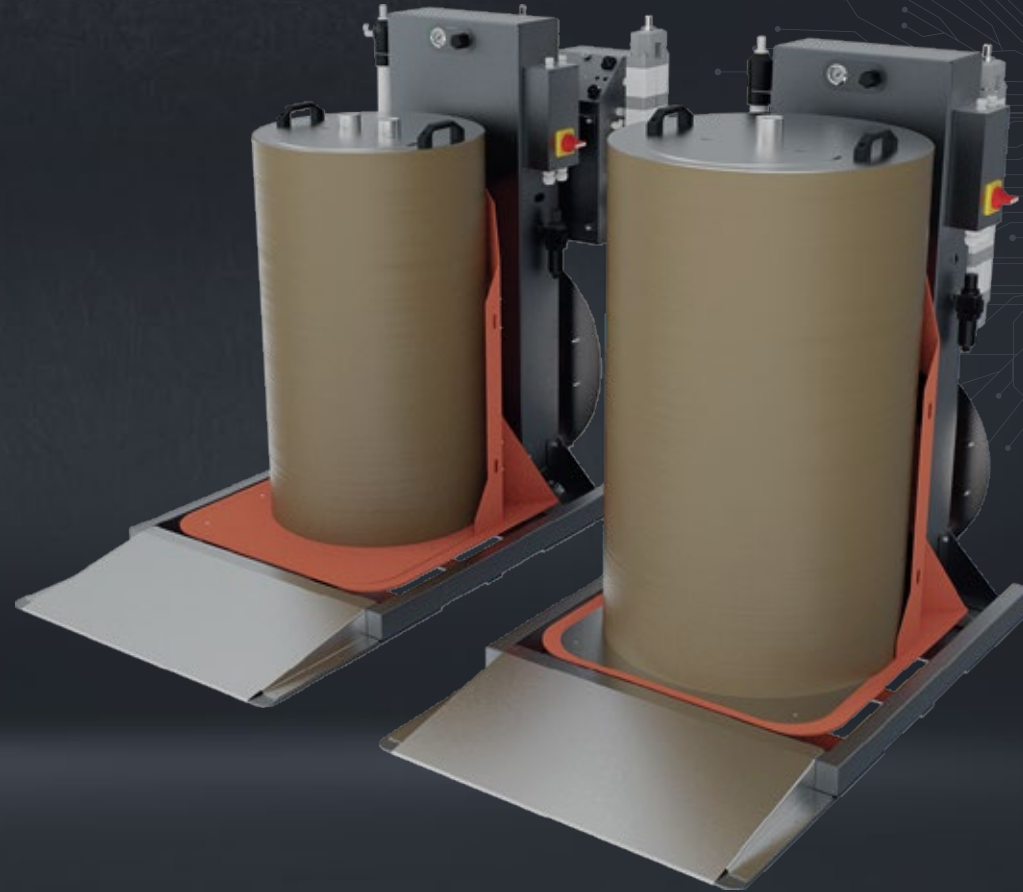
Simple and
Compact Design



Continuous Powder
Coating Saving



Linear
Flow



+3



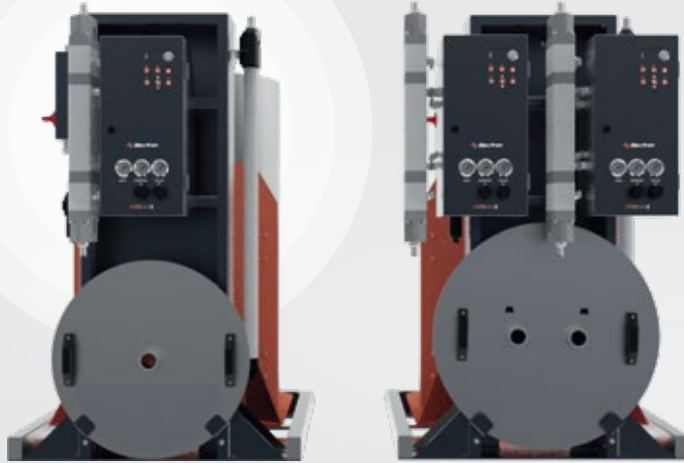
Check our
product
online

electron.com.tr + info@electron.com.tr

 **Electron**

E-FEED+3 BARREL Series

E-FEED+3 HD
Compatible



- + Pumps are self-cleaning with fast purge feature
- + High-capacity paint transfer
- + Ability to change the direction of paint transfer (print where it absorbs, absorb where it is imprinted)
- + Optional barrel of 100 and 200 kg capacity
- + E-FEED+3 BARREL provides a solution that makes powder coating processes more efficient and practical
- + It helps users perform powder coating applications more effectively by offering easy maintenance, high transfer efficiency and compact design advantages



Accessories

Recovery Hose



Vibration Motor



E-FEED+3 HD Pump

Vibration Motor

Recovery Hose

Static Powder Coating Hose

Fiber Barrel

E-FEED+3 BARREL | MONO

1 pcs.

+

+

+

+

E-FEED+3 BARREL | DUAL

2 pcs.

+

+

+

+



Check our
product
online

electron.com.tr + info@electron.com.tr

Electron